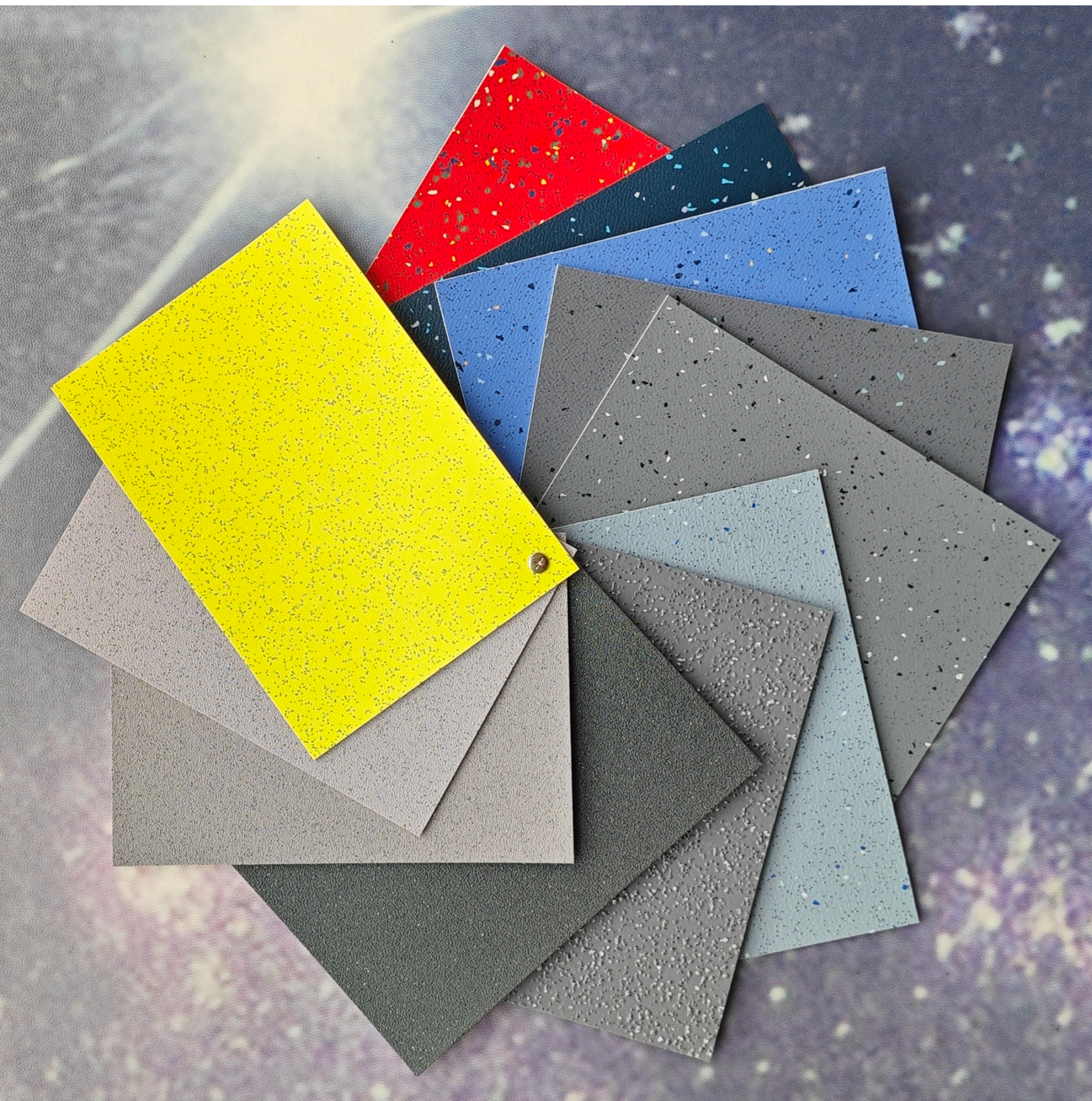


JGS-80

JGS-8806





JGS-8803



JGS-8806



JGS-8808



JGS-8810



JGS-88035

防滑R13





Environment friendly
安全环保



DS
Anti-slip
防滑



Easy-care
保养方便



Wear-resistant
耐磨

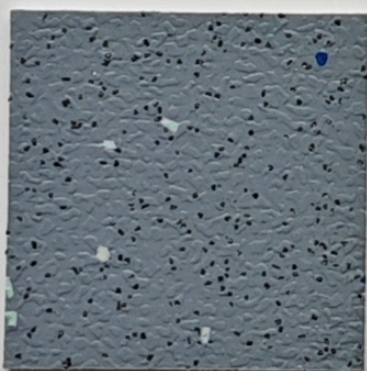


B1-s1
Fire retardant
防火



Acoustic
吸音

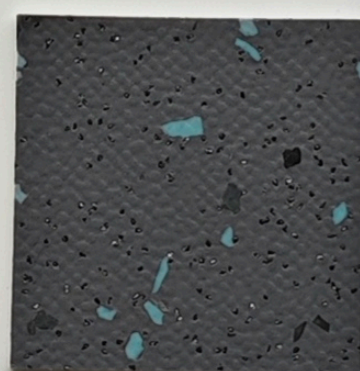
OUR MISSION
GREEN BRAND



JGS-8801-22



JGS-8801-3



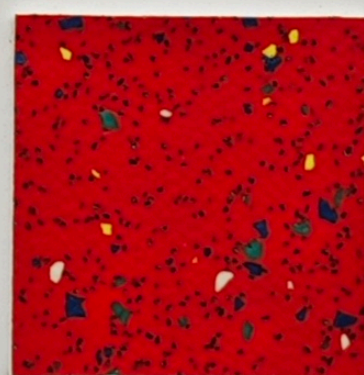
JGS-8801-4



JGS-8801-6

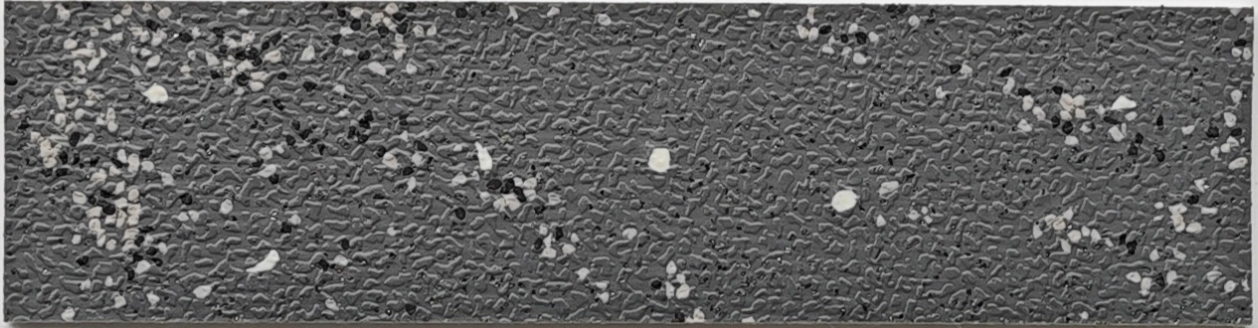


JGS-88033



JGS-88039

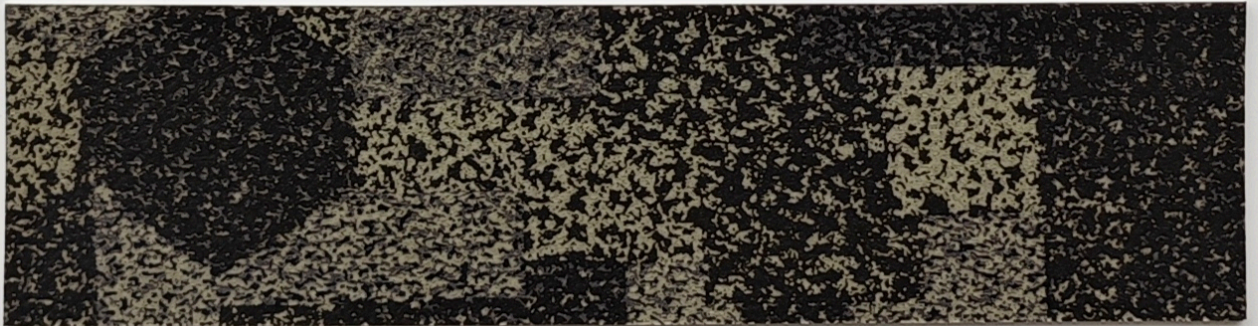
Size:2.0mm X 2m X 20m
2.5mm X 2m X 15m (可定制)
3.0mm X 2m X 15m (可定制)



JGS-8801-30



JGS-8801-12



JGS-88029



JGS-8801-14



特点 Feature

- 环保性能:100%全新料,无DOP,不含重金属
Environmental performance:Using 100% virgin material. without DOP or heavy metal.
- 安全性能:防滑性、耐冲击性强,耐高人流量磨损,独特的抑菌处理,抗菌防霉
Safety performance:Excellent slip resistance,impact resistance,and wear resistance.Unique antibacterial treatment make the products prevent bacterial and fungal contamination.
- 综合性能:创新的防滑卷材,独特压花表面,金刚砂颗粒深入镶嵌,超强耐磨
Comprehensive performance:Antiskid material innovation,having unique embossed surface and deep embedded with emery granules,super wearable.
- 使用性能:双层稳定层结构,尺寸恒定不变形,抗压性能优异,持久耐用
Service performance:The products have double stable-layer structure without deformation.They have excellent compression resistance and durability.
- 应用空间:影剧院、公交、地铁、图书馆、工厂、电梯、医院、餐饮等
Application space:Theatres,buses,undergrounds,libraries,factories,elevators, hospitals.restaurants.etc,



- ① 嵌入金刚砂颗粒
Emery Granules
- ② 加强面层
Reinforced Layer
- ③ 玻璃纤维稳定层&无纺网格布
Glass-fiber stable layer & Non woven mesh fabric
- ④ 加强底层
Reinforced Bottom
- ⑤ 水刺布底层/无纺布底层
Spunlace backing /Non-woven Backing

技术参数 Technical Data



技术参数 TechnicalData	检测方法 Test Method	检测结果 Test Results
总厚度 Total Thickness	EN428	2.0mm
耐磨层厚度 Wear Layer Thickness	EN429	0.5mm
重量 Total Weight	EN430	2500g/m ² (无纺布底层) 3000g/m ² (水刺布底层)
卷宽 Roll Width	EN426	2m
卷长 Roll Length	EN426	20m
耐磨等级 Abrasion Group	EN660	Group T级
防火性能 Fire-proof performance	GB8624-2012	Bf1-S1.T0级
残余凹陷度 Residual indentation	EN433	≤0.02mm
色牢度 Colour Fastness	EN IOS 105-B02	>6
抗化学性能 Anti-chemical Stability	EN423	良好 Fine
尺寸稳定性能 Dimension Stability	EN434	≤0.4%
防滑性能 Anti-Slip Performance	DIN51130	R10
滚轮磨损 Roller Wear	EN425	≥100000
有害物质限量 Limit Of Harmful Substance	GB18586-2001	合格 Qualified